

Fantom

MAGIC DU 1850

**DRY
VACUUM CLEANER**



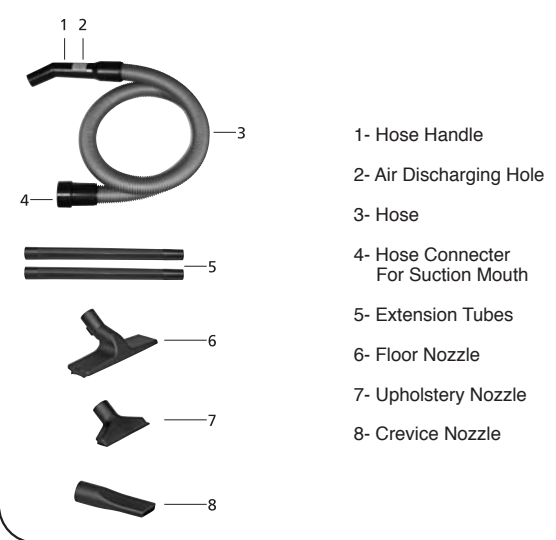
TYPE S 14

USER'S GUIDE

COMPONENT PARTS



ACCESSORIES



PRECAUTIONS (READ BEFORE USING)

PRECAUTIONS



- Make sure that the voltage on the power name plate of the device corresponds to the voltage of your network.
- Use your machine with the right currency. The plug has to be protected with min. 10 amperes.
- In order not to compromise the safety of the appliance, use only original spare parts and accessories. The warranty is not valid if unsuitable spare parts and accessories are used in any way.
- Do not damage the isolation of the cable. In case of damage, the cable has to be immediately replaced by an authorised service center. Do not operate the appliance with the damaged cable.
- Use your machine by the user's guide shown. Do not use it for any other purpose.
- Unplug your machine before doing any maintenance or before cleaning. Do not leave your machine plugged in.
- Do not touch the cable with wet hands.
- Do not pull the machine by its cable or close door on the cable. Do not move your machine as it will coil the cable.
- Do not let your children play with the machine. Pay attention while operating your machine near children.
- Put a paper dustbag in the vacuum cleaner before using dry vacuuming function.
- Keep the machine away from direct heat such as; stove, oven, etc.
- Do not work near inflammable or explosive fluids or gas. Keep your machine away from burning materials.
- Never vacuum warm fluids or materials at more than 60 C, such as burning cigarettes, ashes, glowing coals, etc.
- Do not use your machine for cleaning materials such as razor-blade, nail and especially do not suck up explosive liquids, acids, oil or solvents which may cause explosions.
- Do not vacuum unhealthy dust.

ASSEMBLY FOR DRY VACUUMING FUNCTION



- Unlock the locking latches pulling outwards as shown in the figure.



- Put the motor bonnet away through holding it from carrying handle.



- Lock the paper dustbag to the clips which are on the back side of the suction mouth.
NOTE: Always keep a reserve of paper dustbag, so that the vacuum cleaner will be ready for use at any time.



- Put the cloth dustbag into the tank as shown in the figure.



Note: While using dry vacuuming function, use cloth and paper dustbag together.



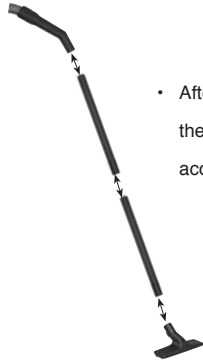
- The paper dustbag should be fixed into the tank as shown in the figure.

- Put the motor bonnet back on the tank through holding it from carrying handle and lock the latches by pushing right and left



- Put the hose into the suction mouth and choose the right choice of accessory for dry vacuuming function.

ASSEMBLY FOR ACCESSORIES



- After connecting the tubes to each other and to the hose handle, attach the right choice of accessory to the extension tubes.



- Instead of using two extension tubes, you can use your machine with only one tube or without any extension tubes by connecting the right choice of accessory for your dry vacuuming area directly to the hose handle.

MAINTENANCE AND CLEANING

- Unplug your machine before doing any maintenance or before cleaning. Do not leave your machine plugged in.
- Empty the tank after each usage.
- Do not wash the motor bonnet and do not put it in water. Only clean it by mopping.
- Clean the tank by mopping or washing.
- Clean the accessories by mopping or washing.
- Change paper dustbag with a new one when it gets full.

NOTE: Always keep a reserve of paper dustbag, so that the vacuum cleaner will be ready for use at any time.

- Empty the cloth dustbag by shaking off. Do not wash or put it in the water.

TECHNICAL SPECIFICATIONS

TYPE S 14

Nominal Voltage : 220-230 V AC

Nominal Frequency : 50/60 Hz

Power : 1500 W



FANSET ELECTRICAL HOUSEHOLD APPLIANCES LTD.

Merkez Mah. Kavaklı Cad. Sönmez Sok. No:24 34660 Halkalı-Istanbul-Türkiye

Tel: (0212) 697 57 70 (pbx) • Fax: (0212) 548 98 78

www.fanset.com