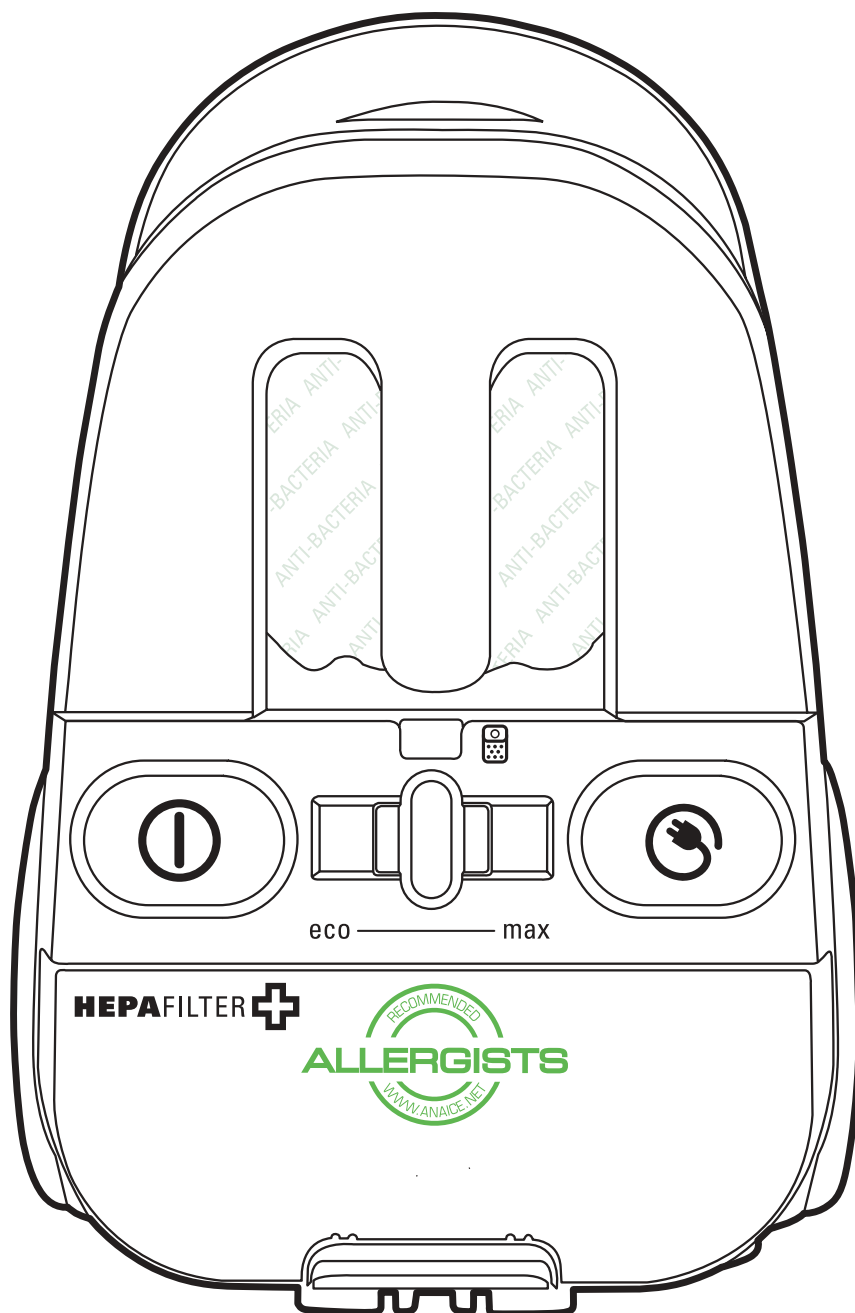
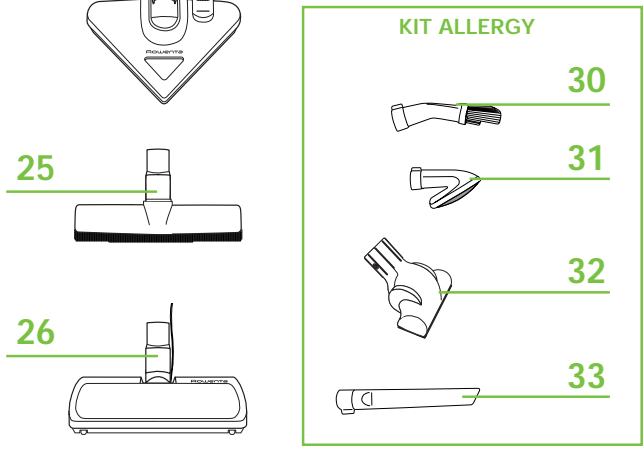
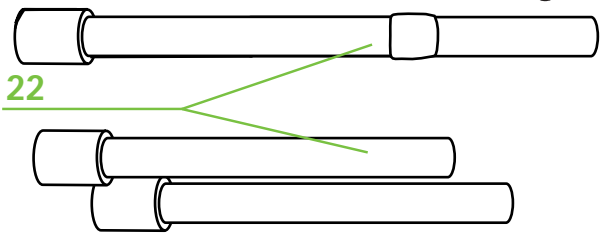
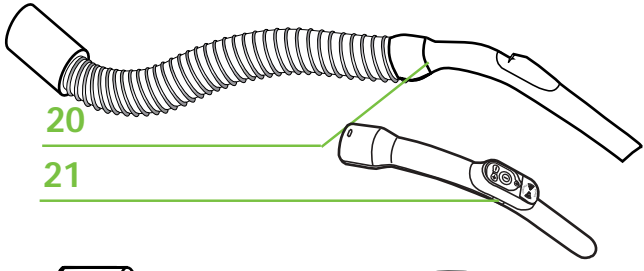
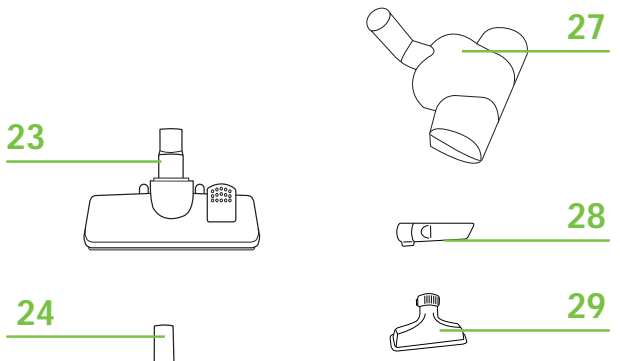
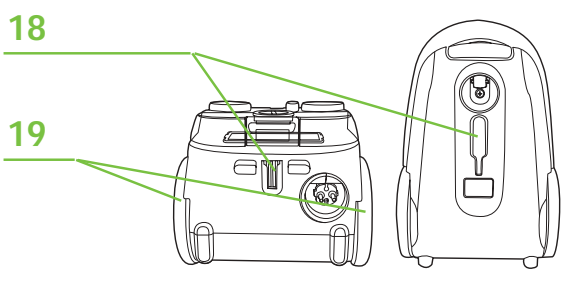
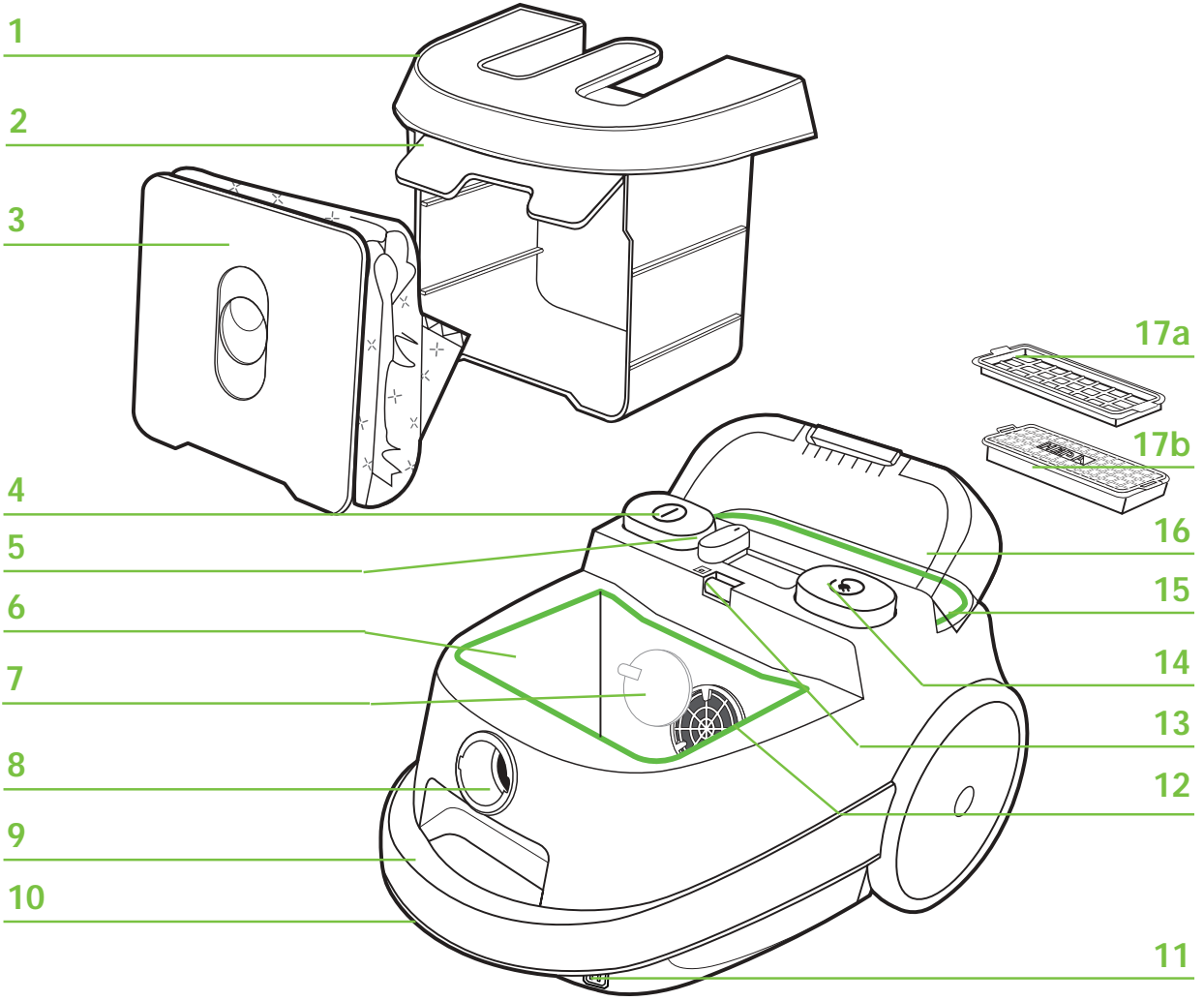


Rowenta

HYGIENE +






mode d'emploi • instructions for use • Gebrauchsanweisung
gebruiksaanwijzing • istruzioni per l'uso • modo de empleo
instruções de utilização • Οδηγίες χρήσης










DESCRIPTION

The Rowenta laboratories have created a unique solution to clean the habitat and to protect its occupants from dust and allergenic particles (acarids, cat allergens, mildews...).

The NO DUST SYSTEM allows vacuuming with no contact with dust. Thanks to the combination of HYGIENE  compartment which contains the bag and the filtration sealed compartment which contains the filter . The prevention of dust of the system is ensured by two seals, situated at the back and at the front of the appliance.

TESTED and APPROVED : in tests done in laboratories (by the Builders Scientific and Technic Centre), the efficiency of the NO DUST SYSTEM technology has been distinguished by the allergy specialists ANAICE which strongly recommends the use of the HYGIENE  vacuum cleaner in the treatment of allergies.

- | | |
|-----------------------------------------------------------------------------------------------------------------------------------------------------------------------------------------------------------------------------------------------------------------------------------------------------------------------------------------------------------------------------------------------------------------------------------------------------------------------------------------------------------------------------------------------------------------------------------------------------------------------------------------------------------------------------------------------------------------------------------------------------------------------------------------------------------------------------------------------------------------------------------------------------------------------------------------------------------------------------------------------------------------------------------------------------------------------------------------------------------------------------------------------------------------------------------------------------------------------------------------------------------------------------------------------------------------------------------------------------------------------------------------------------------------------------------------------------------------------------------------------------------------------------------------------------------------------------------------------------------------------------------------------------------------------------------------------------------------------------------------------------------------------------------------------------------------------------------------------------------------------------------------------------------------------------------------------------------------------------------------------------------------------------------------------|-------------------------------------------------------------------------------------------------------------------------------------------------------------------------------------------------------------------------------------------------------------------------------------------------------------------------------------------------------------------------------------------------------------------------------------------------------------------------------------------------------------------------------------------------------------------------------------------------------------------------------------------------------------------------------------------------------------------------------------------------------------------------------------------------------------------------------------------------------------------------------------------------------------------------------------------------------------------------------------------------------------------------------------------------------------------------------------------------------------------------------------------------------------------------------|
| <ol style="list-style-type: none"> 1. HYGIENE  bowl 2. HYGIENE BAG  positioning guide 3. Anti-bacteria HYGIENE BAG 
ZR 0012 01 4. Start/stop button 5. Variable control eco/max 6. HYGIENE BAG  compartment 7. Antibacteria motor protection 8. Suction opening 9. Handle 10. Bumper to protect skirting boards and furniture 11. Electrobrush connector* 12. HYGIENE BAG  compartment seal 13. Bag full indicator 14. Automatic cord rewind button 15. Filtration compartment seal 16. Filtration sealed compartment cover 17. Filtration system* <ol style="list-style-type: none"> a. Antibacteria microfilter ZR 0012 01* b. Antibacteria HEPA filter  ZR 0011 01*
Your vacuum cleaner is equipped either with a microfilter (a), or with HEPA  filter (b). 18. Park position 19. Soft wheels to protect fragile floors <p>Standard or optional accessories*</p> <ol style="list-style-type: none"> 20. Suction hold with extra long shaft, suction regulation control and integrated brush (for furniture) 21. Shaft with remote control* 22. 2 extension tubes or telescopic tube* 23. 2 position cleaning head* 24. Delta Silence cleaning head* | <ol style="list-style-type: none"> 25. Parquet cleaning head*
For delicate floors 26. Electrobrush ZR 155*
For in-depth vacuuming and cleaning of rugs and carpets. It removes threads and animal hairs.- see Electrobrush ZR 155 instructions for use. 27. Turbobrush ZR 980*
With its air-flow driven rotating brush, the Turbobrush gives in-depth vacuuming and cleaning. It removes threads and animal hairs trapped in rugs and carpets. 28. Crevice tool*
For crevices and out of reach corners 29. Upholstery tool*
For cushions and upholstery <p>Kit ALLERGIES*</p> <ol style="list-style-type: none"> 30. Suction duster tool
For dust on furniture, around curios, on TV screens... 31. Suction foam tool
To vacuum softly fabrics, curtains... 32. Special mattress brush ZR 08
For in depth cleaning of mattresses and bed linen 33. Extra long flat tool
For easy cleaning of out of reach corners <p>* : this refers to specific tools supplied with certain models as standard, or available as optional extras.</p> |
|-----------------------------------------------------------------------------------------------------------------------------------------------------------------------------------------------------------------------------------------------------------------------------------------------------------------------------------------------------------------------------------------------------------------------------------------------------------------------------------------------------------------------------------------------------------------------------------------------------------------------------------------------------------------------------------------------------------------------------------------------------------------------------------------------------------------------------------------------------------------------------------------------------------------------------------------------------------------------------------------------------------------------------------------------------------------------------------------------------------------------------------------------------------------------------------------------------------------------------------------------------------------------------------------------------------------------------------------------------------------------------------------------------------------------------------------------------------------------------------------------------------------------------------------------------------------------------------------------------------------------------------------------------------------------------------------------------------------------------------------------------------------------------------------------------------------------------------------------------------------------------------------------------------------------------------------------------------------------------------------------------------------------------------------------|-------------------------------------------------------------------------------------------------------------------------------------------------------------------------------------------------------------------------------------------------------------------------------------------------------------------------------------------------------------------------------------------------------------------------------------------------------------------------------------------------------------------------------------------------------------------------------------------------------------------------------------------------------------------------------------------------------------------------------------------------------------------------------------------------------------------------------------------------------------------------------------------------------------------------------------------------------------------------------------------------------------------------------------------------------------------------------------------------------------------------------------------------------------------------------|

HINTS AND PRECAUTIONS

Before each use, the supply cord should be completely unwound. Do not allow it to become trapped or pulled over sharp edges. Never lift the appliance by its cord, always use the handle. If you use an extension cord, make sure that it is in perfect condition and appropriate to the power rating of your appliance. Never unplug the appliance by pulling on the cord.

Always turn off and unplug your appliance before maintenance or cleaning.

Use only the carrying handle to move the appliance. Never try to move it using the HYGIENE + bowl handle.

Your appliance is equipped with a motor protection system. In certain cases of use (suction hose on the car seats...), when it starts, the appliance can make a noise.

Only use original Rowenta accessories, bag and filter. Only connect Rowenta electrobrush ZR 155 in the electrobrush connector. Before each use check that the HYGIENE + is correctly into place.

Never use the appliance without HYGIENE BAG + , filter and motor filter protection.

For any problems or queries please contact CUSTOMER RELATIONS:

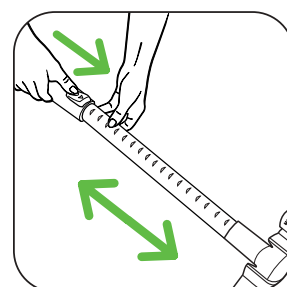
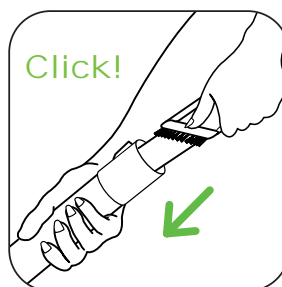
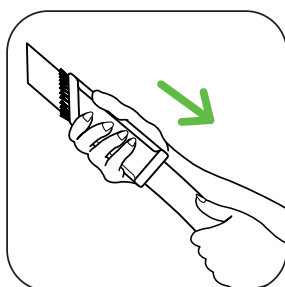
0845 602 1454 - UK (calls charged at local rate)

(01) 47 51 947 - IRELAND

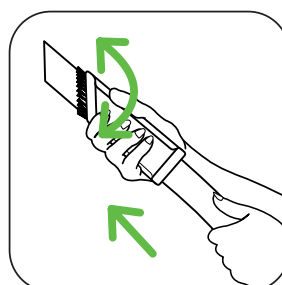
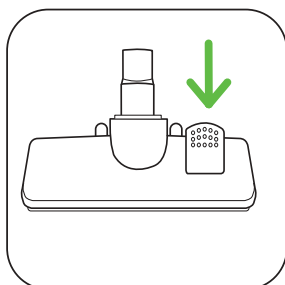
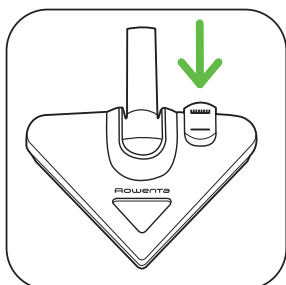
or visit our web site : www.rowenta.uk.co

BEFORE USE

1 • assemble your vacuum cleaner



2 • choose the right tool

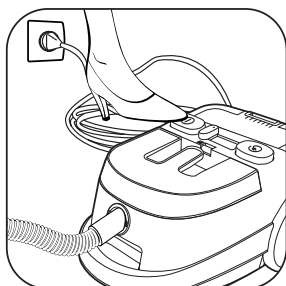
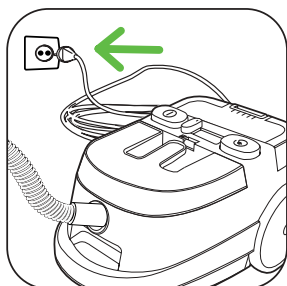




Brush retracted for rugs and carpets.

Brush extended for smooth floors.

VACUUMING

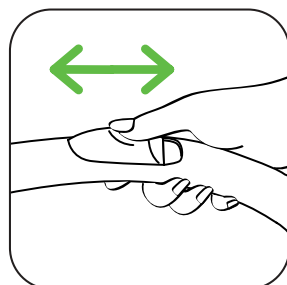
3 • turn on your appliance



Caution ! Check that the **HYGIENE**  bowl is in place before each use. Never use the appliance without the **HYGIENE BAG** .

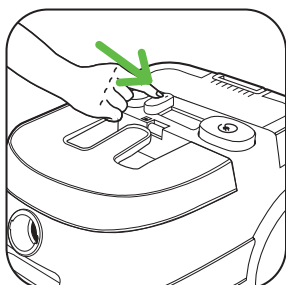
4 • adjust the suction power

With the mechanical power control :



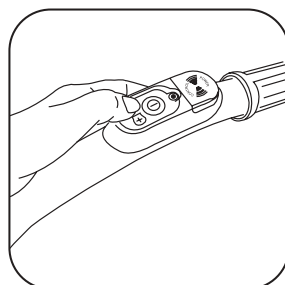
Closed : floors
Open : furniture, delicate surfaces...

With the electronic power control :



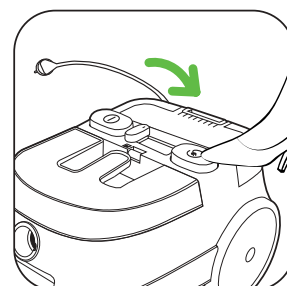
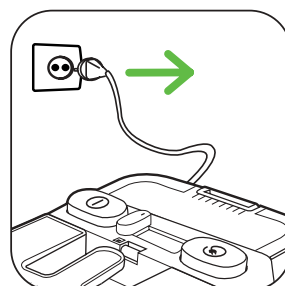
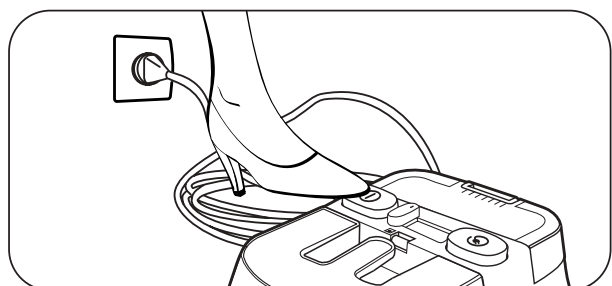
Max : floors
Eco : furniture, delicate surfaces...

With the remote control* :



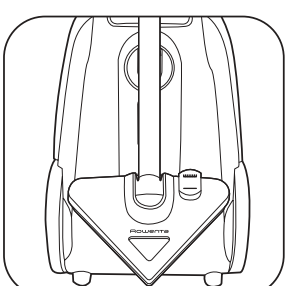
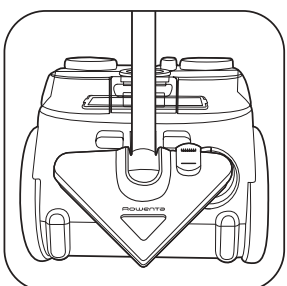
+ : floors
- : furniture, delicate surfaces...

5 • turn off the appliance



Caution ! With the remote control, press on **PAUSE** then on the **Start/stop** button to stop the appliance.

6 • store the appliance

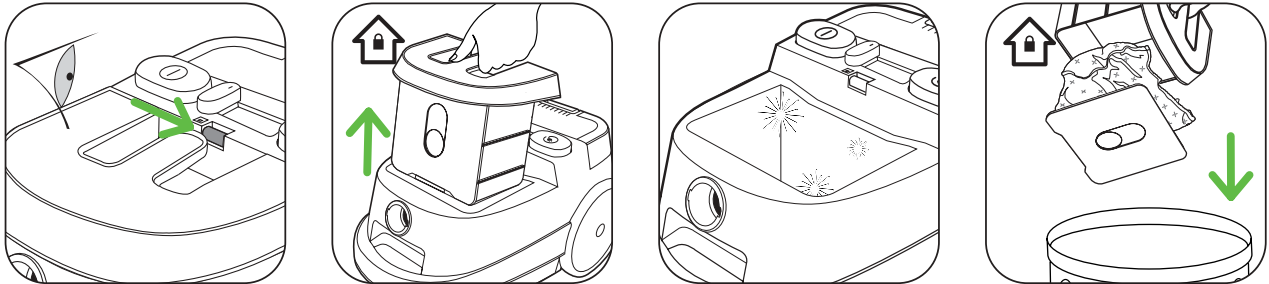



MAINTENANCE AND CLEANING



Important ! Always turn off and unplug your appliance before maintenance or cleaning.

7 • HYGIENE bowl : dispose of the HYGIENE BAG

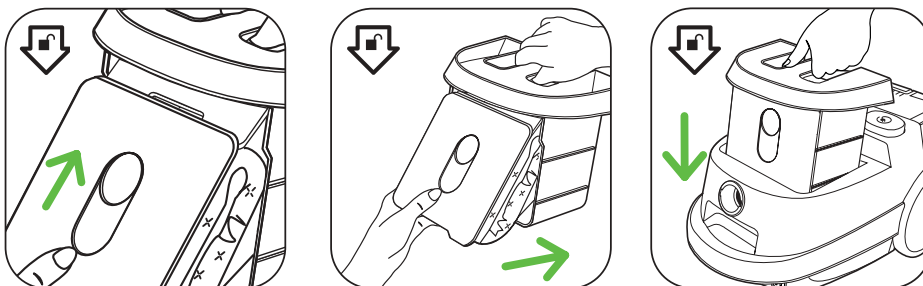
When the bag full indicator is red, the bag is full or blocked with dust particles. If the indicator remains red with the nozzle lifted off the ground, change the bag.



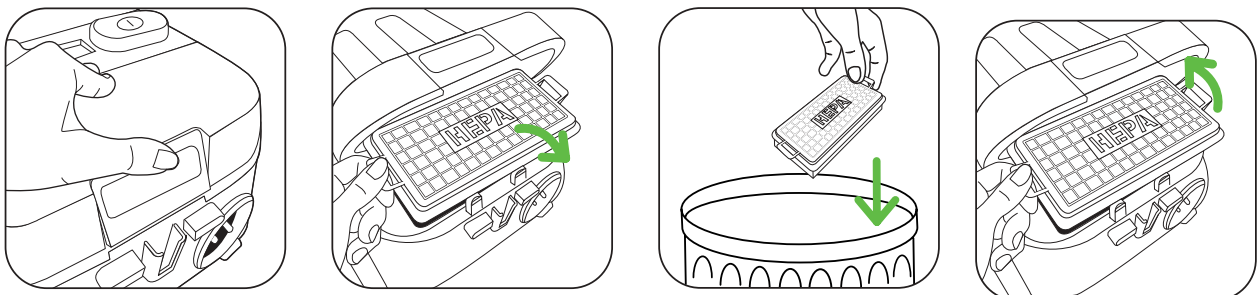
Caution ! Thanks to the HYGIENE  bowl, no more contact with the dust and your vacuum cleaner is clean. You can wash the bowl if necessary. Dry it thoroughly before putting it back into place.


Caution ! Never use the appliance without the HYGIENE  . Check that the HYGIENE  bowl is correctly into place.

8 • put a new HYGIENE BAG in place



9 • filtration sealed compartment : change the antibacteria HEPA filter or the antibacteria microactive filter *

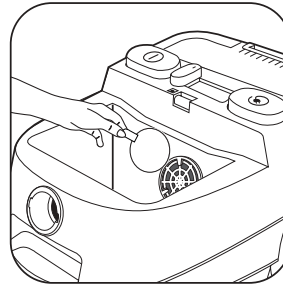
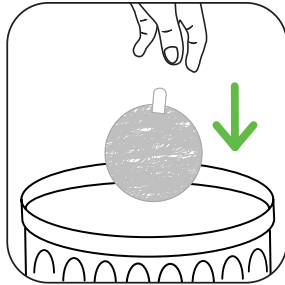
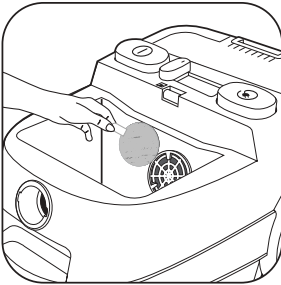


Change the HEPA filter  every 9 month. It is advised that you note on the filter the date of first use.

Replace the antibacteria microactive filter and the antibacteria motor protection every 4 dustbags changes.

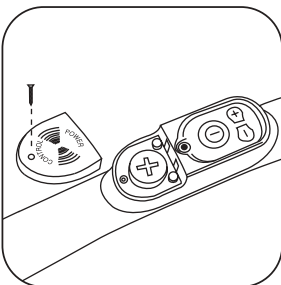
Caution ! Never use the appliance without the filtration system.

10 • change the antibacteria motor protection



Caution ! Never use the appliance without the motor filter protection.

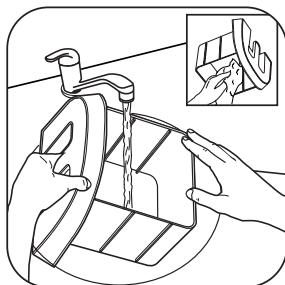
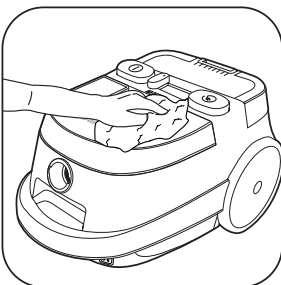
11 • change the remote control battery



Caution ! Appliances equipped with an infrared remote control contain lithium batteries. Do not throw these away with household rubbish: dispose of them at your local waste disposal centre.

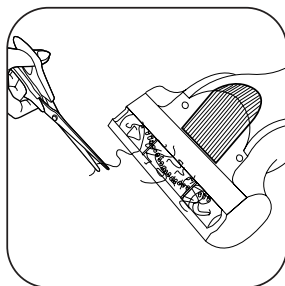
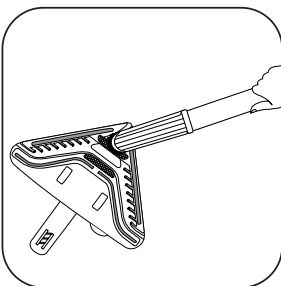


12 • clean your appliance



Important ! Do not use strong or abrasive cleaning products. The HYGIENE+ bowl's transparency may change with time. This will not affect the performance of the product.

13 • clean the accessories



Caution ! for the best hygiene, clean the Delta Silence cleaning head and the special mattress brush after each use.

FOR YOUR SAFETY

Read the instructions for use carefully and keep them in a safe place.

Your vacuum cleaner is an electrical appliance: it must only be used under normal operating conditions. The appliance should be used and stored out of the reach of children. Never leave the appliance unattended when it is switched on.

The appliance is not intended for use by young children or infirm persons without supervision.

Young children should be supervised to ensure that they do not play with the appliance. Always keep nozzles and tube ends well away from eyes and ears.

Make sure that the operating voltage of your vacuum cleaner is the same as your supply voltage - 230-240v.

Unplug the appliance by removing the plug from the power outlet:

- immediately after use,
- before changing accessories,
- before maintenance, cleaning or changing the dustbag

Do not vacuum wet surfaces, any kinds of liquids, hot substances, **ultra-fine substances (plaster, cement, ash, etc.)**, large sharp debris (glass), dangerous products (solvents, stripping compounds, etc.), chemical products (acids, cleaners, etc.), inflammable or explosive products (petrol- or alcohol-based).

Do not immerse the appliance in water or store it outdoors.

Do not use the appliance:

- if it has been dropped and shows signs of damage or functions abnormally.
- if the supply cord is defective

In this case do not open the appliance and call our helpline (overleaf).

Repairs should only be carried out by specialists using original replacement parts. It is dangerous to try to repair an appliance by yourself.

Vacuum cleaner supply cords and winding systems must, in all cases, be replaced by our approved Service Centre.

In accordance with current regulations, before disposing of an appliance no longer needed, the appliance should be made non-operational (by unplugging it and cutting off the electricity supply cord).

This product has been designed for **domestic use only**. Any professional use, inappropriate use or failure to comply with the instructions, the manufacturer accepts no responsibility and the guarantee will not apply.

Your appliance conforms to the 73/23 EEC and 89/336 EEC directives.







WHAT TO DO IF ...

As soon as your vacuum cleaner starts to malfunction, and before performing any checks: stop the appliance by pressing the Start/Stop button and unplug it.

Your appliance does not start

- The appliance is not plugged in
Check that the appliance has not been unplugged, and plug it back in if necessary (see § 3).

Your appliance performs poorly, makes some noise, whistles and stops.

- The hose or tool is partly blocked
Unblock the hose or tool.
- HYGIENE BAG  is full or saturate
Change HYGIENE BAG 
- The antibacteria HEPA , the antibacteria microactive filter , or antibacteria motor protection is saturated.
Change the filter
- The HYGIENE  bowl does not fully fit into place
If the dustbag is in place, remove the bowl, put the bag back into place (opening open).
Check that there is no dust in the appliance. HYGIENE BAG  cardboard is damaged, change the bag.
- The electronic control is in the ECO position
Set the control to the MAX position unless you are vacuuming delicate fabrics (see § 4).
- The suction regulation control is open
Close it (see § 4).

Your vacuum cleaner stops while vacuuming

- The safety thermostat has tripped
Check that nothing is blocking the tool, hose or spiral separator, and that the filter is not clogged. Allow the appliance to cool down for approximately 30 minutes before switching on again

The remote control* does not work or does not work well

- Obstacles, walls or certain surfaces (partitions, doors, high ceilings, lofts, bay windows, dark paint, etc.) interfere with or prevent transmission
Point the handle at the vacuum cleaner
- Infrared sources (sun, energy-saving light bulbs, etc.) disrupt transmission
Move away or turn them off
- The batteries have run down.
Replace the battery. Use lithium batteries CR2032 and change it when necessary (see § 11).

The power cord does not fully retract.

- The cord slows down as it is retracted
Pull out the cord until completely extended and press on the cord rewind command (see § 5).

If the problem persists, send the appliance to your nearest Rowenta Approved Service Centre

HELPLINE:

If you have any product problems or queries, please contact our Customer Relations Team first for expert help and advice:

0845 602 1454 - UK

(01) 4751947 - Ireland

or consult our website - www.rowenta.co.uk